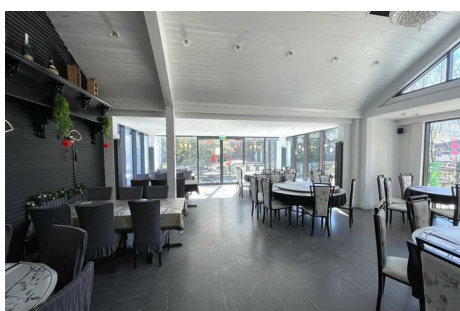
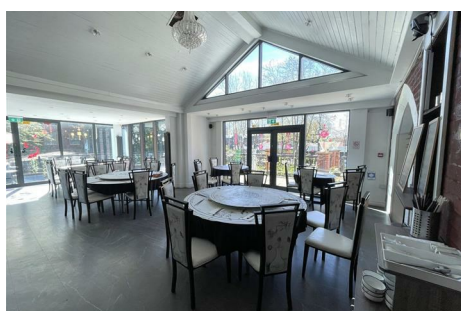


Park Lane

Your Local Estate Agent

Residential & Commercial Property



17 Anson Road
, Manchester, M14 5BZ

AVAILABLE NOW* *PRICE EXCLUDES VAT Park Lane Estate Agents are proud to offer To Let this self-contained Restaurant spanning the ground floor premises of this well-located and Grade II Listed Milverton Lodge, offering on-site car parking along with a rear loading area. Two toilets are located down one flight of stairs. The car parking area is shared with other businesses. Large basement storage chambers and a walk-in freezer. Business rates are £28,000.00 Per Annum. Contact us now to arrange your viewing!

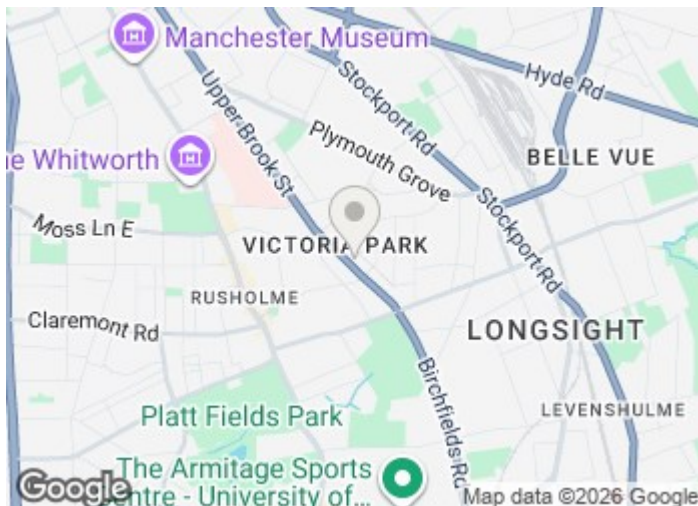
£6,000 Per Calendar Month

17 Anson Road

, Manchester, M14 5BZ



- RESTAURANT SPACE AVAILABLE TO RENT
- EQUIPPED AND SIZEABLE KITCHEN
- LARGE BAR AREA
- CONTACT US NOW TO ARRANGE YOUR VIEWING
- PRICE EXCLUDES VAT
- FURNITURE AVAILABLE UPON NEGOTIATION
- SECURE LOADING TO THE REAR AND STAFF ACCESS
- CAR PARK
- MALE & FEMALE TOILETS (FOUR TOILETS IN TOTAL)
- LARGE COMMUNAL GARDEN SPACE



[Directions](#)





Floor Plan

These particulars, whilst believed to be accurate are set out as a general outline only for guidance and do not constitute any part of an offer or contract. Intending purchasers should not rely on them as statements of representation of fact, but must satisfy themselves by inspection or otherwise as to their accuracy. No person in this firm's employment has the authority to make or give any representation or warranty in respect of the property.

